



STORM WATCH

VOLUME 1 • ISSUE 2 • JANUARY 2026



TEAM WELCOME

With 2026 finally here and the weeks counting down to the race, the team has been busy. First welds have been made, wires connected and tubes bent. The safety cell will be finished in no time! Soon enough the Flat Car (all the electronics that will go inside the car) will be finished as well!

THE SOLAR STORMS NEWSLETTER

TABLE OF CONTENTS

CAD Design

Flat Car

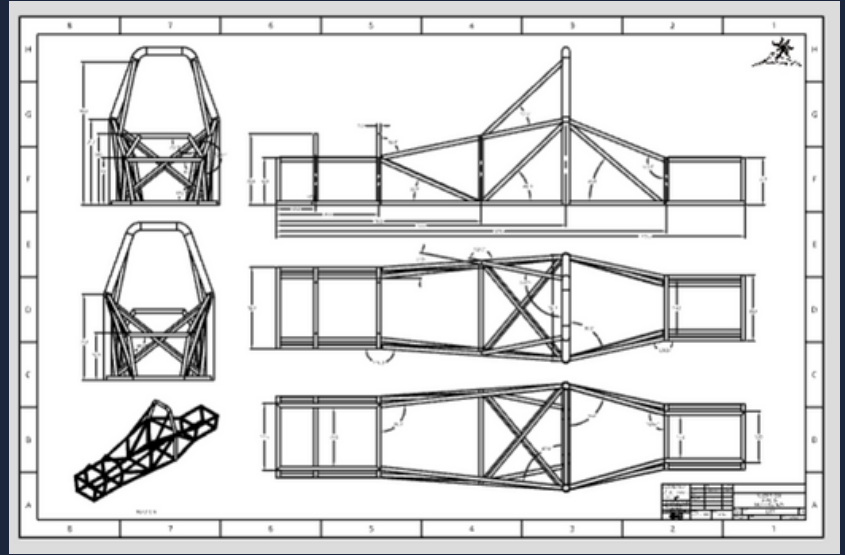
The New Shop

The Chassis



CAD DESIGN

The chassis CAD design is finally finished! Now converting the online dream to a physical reality has become our main priority and making the drawings as simple and easy for the welders to read is the task at hand. Not to mention triple checking all the dimensions just incase!



SOLAR STORMS SPONSORS

Sunrise

\$1,000-\$2,999



Eclipse

\$3,000-\$4,999

Solar Flare

\$5,000-\$9,999



TITLE

\$10,000+

Help the Team Get to Texas!

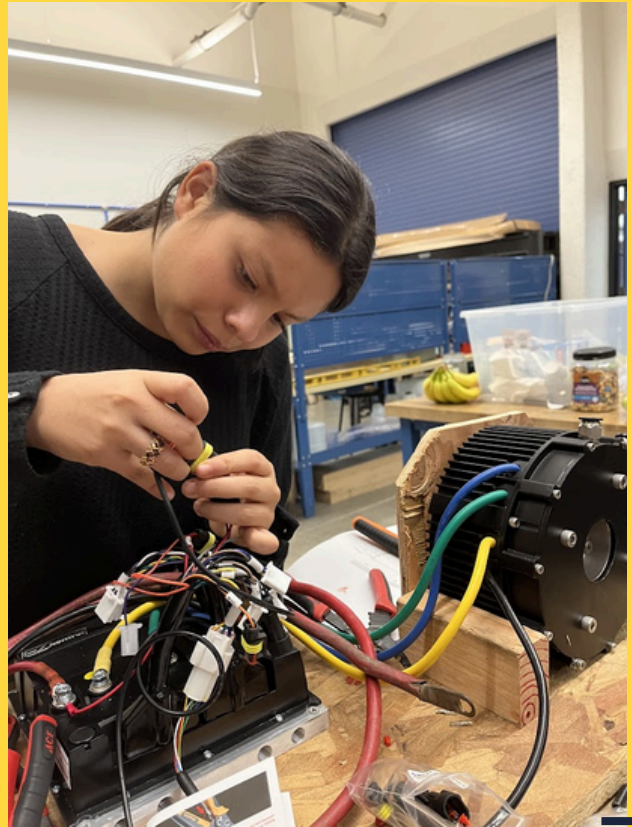
Interested in supporting the team? Click [here](#) to donate today or reach out to us at hrvhs.solarcar@gmail.com to become a sponsor!





FLAT CAR

The flat car has gotten plenty of attention over the past weeks. With the motor connected to the motor controller and two of four batteries already here, we started hooking up the large components. We have the motor finally running and now we just need to figure out the smaller wiring like the lights, horn and AC (a required component for racing under the Texas sun).



THE NEW SHOP

A huge thanks to the Hood River Valley High School for providing their outstanding shop space! Instead of cramped conditions, the team is now situated in a proper, full scale workshop, complete with a heater, multiple welding stations, and high grade equipment. meaning we can get right to work immediately after school



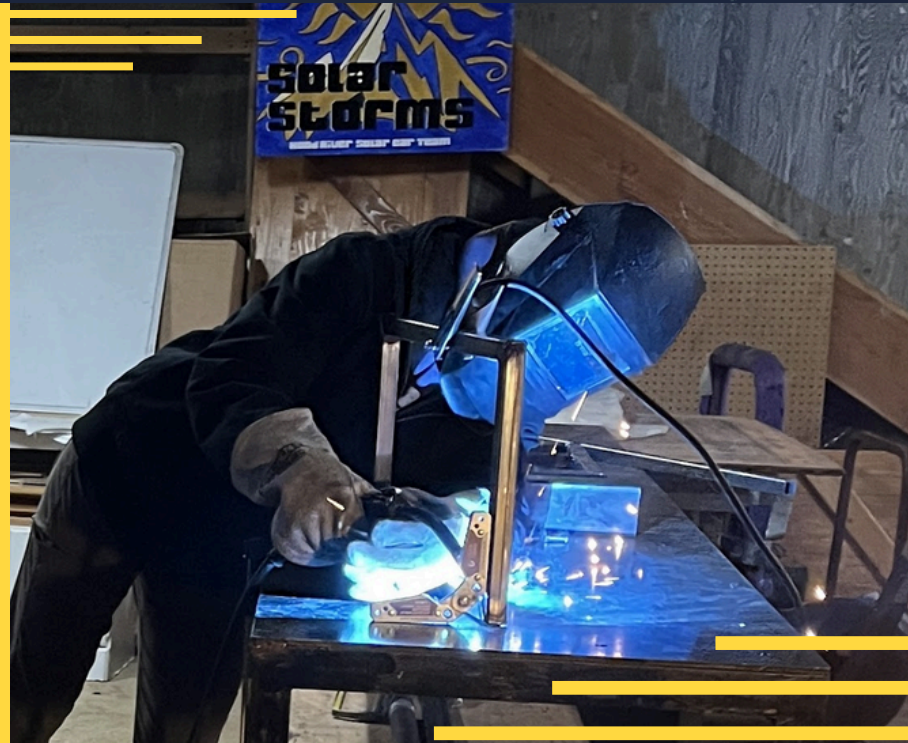


THE CHASSIS

By Henry Mason

Over winter break, myself, Isabel, Ori, and a number of others began the long process of welding the chassis. We started by refreshing our skills: some had welded before while others were completely new to the subject. After a few sample pieces, we began work on the real deal.

Beginning by cutting pieces of steel, grinding them, and finally welding them together. After a few sessions, the car began to take shape. So far, we have just about finished the entire rear section and are beginning the same process for the forward section. We are quite looking forward to continuing to build the rest of the chassis.



SPREAD THE STORM!

Scan or search to sign up for the monthly StormWatch!

<https://forms.gle/bWADm8Se2jzUhLwN8>

